

Spotlight on

LEARNING

...why we do what we do

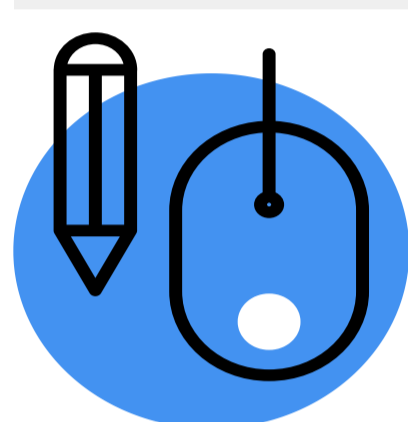


Collaborative Teaching

Through collaboration and innovation, we all live, learn and grow.



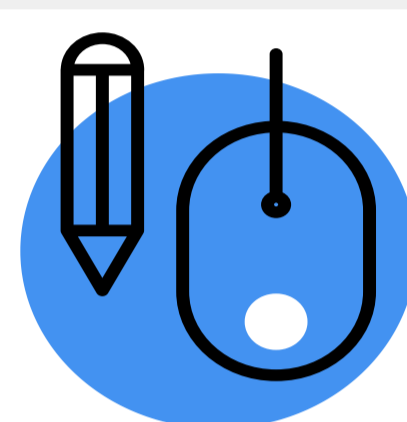
Our staff work in teams. We collaborate to improve both children's learning and our own practice. Collaboration means not just sharing our ideas, beliefs and strategies, but merging these to create a better model of practice. Collaborative teaching is also referred to as co-teaching. When teachers can work together, share the responsibility, share strengths and skills, and see one another in action, the learning is enhanced.



Why focus on... Collaborative Teaching

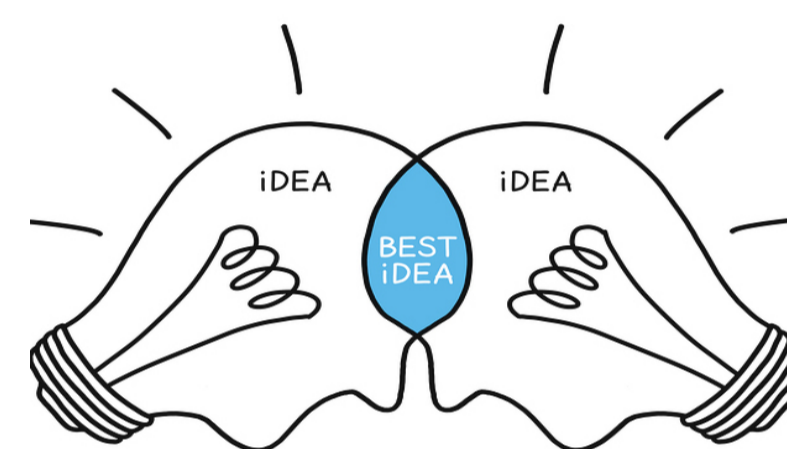
At Pauatahanui School we teach in collaborative hubs because we believe collaboration:

- provides professional support for teachers and teachers can learn from each other
- is more enjoyable than teaching in isolation from your colleagues
- increases trust and accountability
- allows us to achieve better learning outcomes for children
- allows teachers' individual strengths and passions to flourish
- models to the students the importance of collaboration
- allows students to have frequent interactions with a range of teachers
- allows for greater differentiation of the class programme to support all learners as there are now 2 teachers, rather than 1 catering for a large range of abilities
- results in deeper analysis of each child's learning needs through the different perspectives of teachers
- gives students opportunities to work and interact with more peers



Why is it.... Important

Simply put..... two heads are better than one.



A significant driver from an educational point of view is our understanding of collective teacher efficacy (CTE) which refers to a staff's shared belief that through their collective action, they can positively influence student outcomes. CTE is ranked as the number one factor influencing student achievement. According to the Visible Learning Research (see related links), CTE is beyond three times more powerful and predictive of student achievement than social-economic status. Collective Teacher Efficacy is greatly enhanced if teachers are able to work closely together.

Our Values

P.A.U.A

We want our learners to be **Ambitious**, develop deep **Understandings**, have a great **Attitude** and demonstrate **Perseverance** with their growth as learners and as people. These core values can be greatly enhanced in a collaborative environment. Students and teachers can be much more nimble and utilise the strengths of others to enhance learning experiences.



Links to research

John Hattie: 'Collective Teacher Efficacy'.
<https://bit.ly/3eKE1sd>

TKI- Innovative Learning Environments and Collaborative Teaching
<https://bit.ly/3ifZF9K>

Examples of Collaborative Teaching Strategies



One Teach, One Observe	One teachers leads the instruction while the other observes and gathers data to be reviewed after the lesson.
One Teach, One Assist	One teacher leads instruction while the other circulates the room and provides assistance to students as needed. This method should be used the least.
Parallel Teaching	Both teachers teach the same content, but to a divided class. This allows for differentiation. The teachers should alternate the group they work with.
Team Teaching	Both teachers share the delivery of the same content at the same time to the whole group. This is the most complex co-teaching style and requires the most planning.
Station Teaching	Both teachers divide content and students. Students spend time with each teacher. A third station can be added for independent work.
Alternative Teaching	One teacher delivers instruction to the whole class while the other works in small groups to provide preteaching and reteaching, as needed.